



EP18EO – Culture of Safety

EP18EOb Hospital Acquired Pressure Injury (HAPI) Stage 2 and above

Measurement: Percentage of patients surveyed with Hospital Acquired Pressure Ulcers Stage 2 and above.

Vendor: National Database of Nursing Quality Indicators (NDNQI).

Benchmark: NDNQI Magnet Mean.

Units not included: The below units are excluded as they are classified as Inpatients in the organization and the vendor does not have inpatient measures for these units.

- Labor and Delivery: Labor & Delivery
- Postpartum: OB/GYN. Gynecology unit created to segregate gynecology patients for HAPI Stage 2 and above.
- Operating Room Full Service: OR
- Operating Room Full Service: Recovery Room

Units included: Units Included for Hospital Acquired Pressure Ulcers (HAPI) Stage 2 and above.

Table EP18EOb.1 Units Included for Hospital Acquired Pressure Ulcers (HAPI) Stage 2 and above

Vendor Classification	Nursing Units
Critical Care-Adult	1. Med-Surg ICU (COVID-19) 2. Surgical ICU
Medical-Adult	3. 24 Hour Admission Unit (COVID-19) 4. Medical-North (COVID-19) 5. Medical-South (COVID-19)
Surgical-Adult	6. Surgical 7. Renal Transplant Unit
Med-Surg Comb. Adult	8. Cardiac Vascular Telemetry-North 9. Neuroscience 10. VIP 11. Oncology – Adult 12. Gynecology
Adult High Acuity	13. Coronary Care Unit

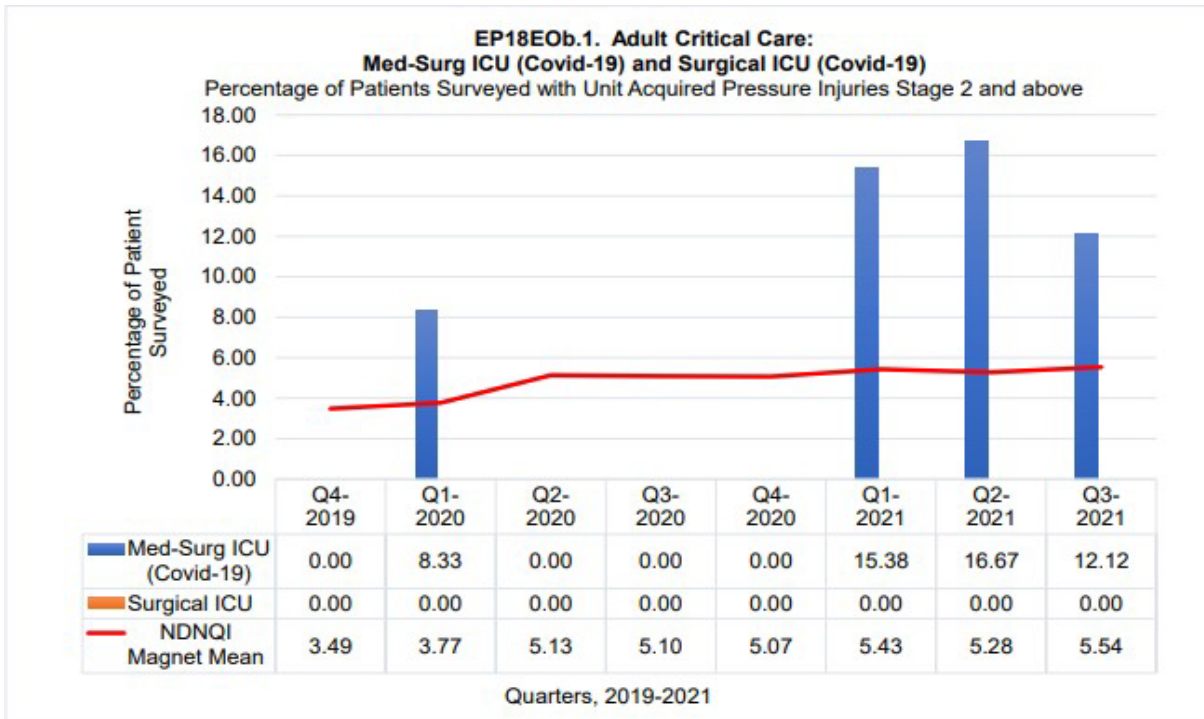
Critical Care-Pediatric	14. Cardiac Surgery ICU 15. Pediatric ICU
Level III Neonatal Critical Care	16. Neonatal ICU
Pediatric Med-Surg Combined	17. Pediatric 18. Oncology Pediatric 19. Cardiac Vascular Telemetry-South

Table EP18EOb.2 Summary of Unit Results for Hospital Acquired Pressure Ulcers Stage 2 and above, 2019-2021

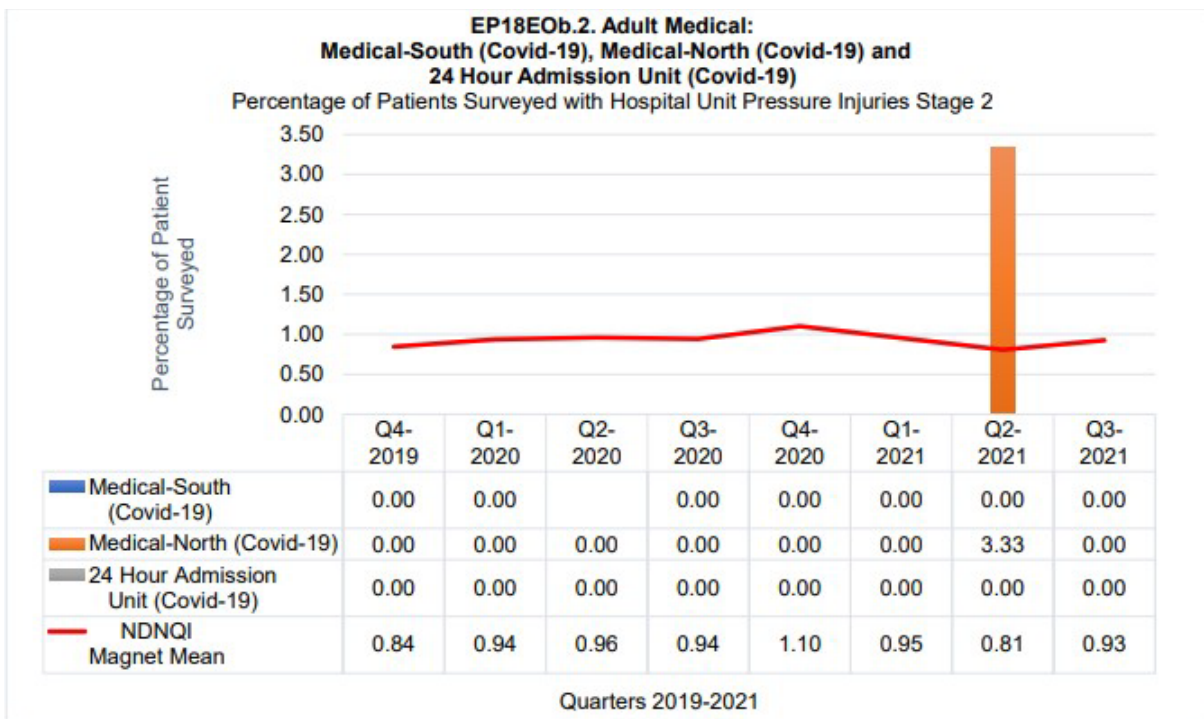
Summary of Percentage of Patients Surveyed with Hospital Acquired Pressure Ulcers Stage 2 and above for all Units that outperform the NDNQI Magnet Mean									
Units	Q4-2019	Q1-2020	Q2-2020	Q3-2020	Q4-2020	Q1-2021	Q2-2021	Q3-2021	Outperform
Med-Surg ICU (COVID)	0.00	8.33	0.00	0.00	0.00	15.38	16.67	12.12	4/8
Surgical ICU	0.00	0.00	0.00	0.00	0.00	0.00	0.00	0.00	8/8
Medical-South (COVID)	0.00	0.00	N. D.	0.00	0.00	0.00	0.00	0.00	7/8
Medical-North (COVID)	0.00	0.00	0.00	0.00	0.00	0.00	3.33	0.00	7/8
24 Hour Admission Unit (COVID)	0.00	0.00	0.00	0.00	0.00	0.00	0.00	0.00	8/8
Surgical	0.00	0.00	0.00	0.00	0.00	0.00	1.30	0.00	7/8
Renal Transplant Unit	0.00	0.00	0.00	0.00	0.00	0.00	4.35	14.29	6/8
Neuroscience	0.00	0.00	0.00	0.00	0.00	0.00	7.69	0.00	7/8
Cardiac Vascular Telemetry - North	0.00	0.00	0.00	0.00	0.00	0.00	2.38	2.70	6/8
Oncology - Adult	0.00	0.00	0.00	0.00	0.00	0.00	2.00	1.54	6/8
VIP	0.00	0.00	0.00	0.00	0.00	0.00	0.00	0.00	8/8
Gynecology	0.00	0.00	0.00	0.00	0.00	0.00	0.00	6.67	7/8
Coronary Care Unit	0.00	0.00	0.00	0.00	0.00	0.00	0.00	0.00	8/8
Pediatric ICU	0.00	0.00	0.00	0.00	0.00	0.00	0.00	3.85	7/8
Cardiac Surgery ICU	0.00	0.00	0.00	0.00	0.00	0.00	0.00	0.00	8/8
Neonatal ICU	0.00	0.00	0.00	0.00	0.00	0.00	0.00	5.88	7/8
Pediatric	0.00	0.00	0.00	0.00	0.00	0.00	0.00	0.00	8/8
Oncology Pediatric	0.00	0.00	0.00	0.00	0.00	0.00	0.00	0.00	8/8
Cardiac Vascular Telemetry - South	0.00	0.00	0.00	0.00	0.00	0.00	0.00	0.00	8/8
Units Outperforming NDNQI Magnet Mean	19/19	18/19	18/19	19/19	19/19	18/19	12/19	12/19	18/19

Outcome

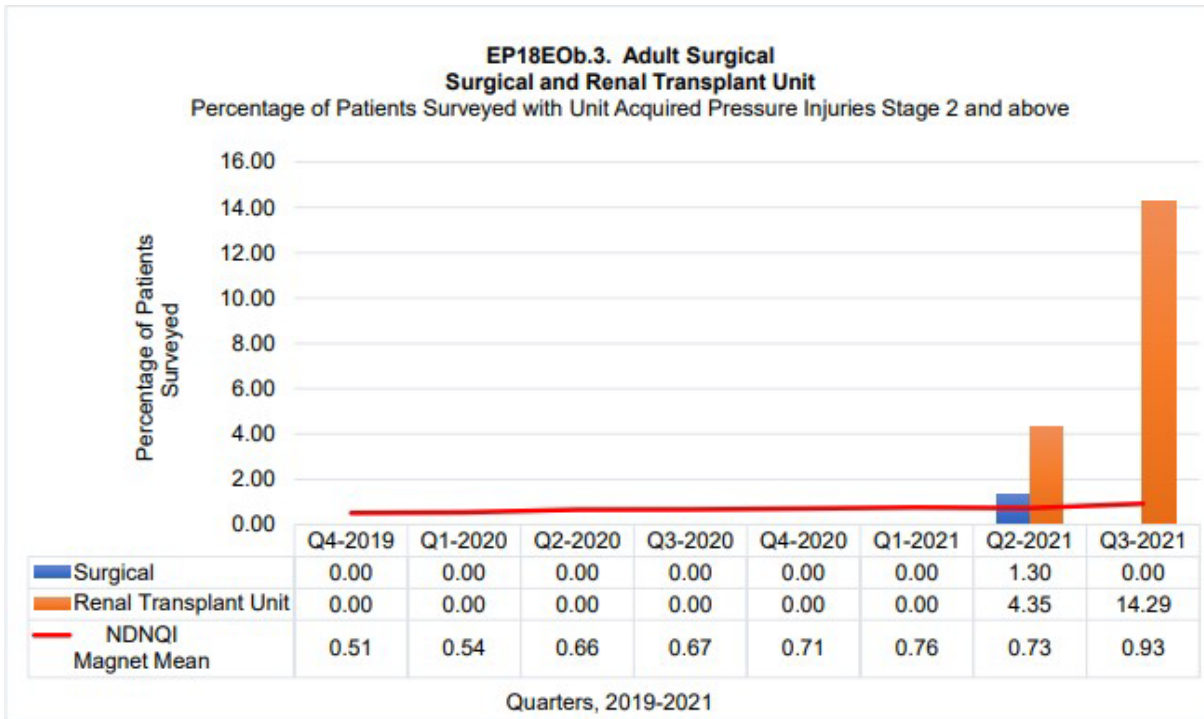
- 18/19 units (94.73%) outperformed the NDNQI Magnet Mean for percentage of patients surveyed with Hospital Acquired Pressure Ulcers Stage 2 and above more than 50% of the time (5/8 quarters).
- Medical South Q2, 2020: Pressure Injury Survey not conducted as the unit was closed due to the COVID-19 pandemic. Vendor feedback is to leave this unit blank for Pressure Injury data since no patients were surveyed and reported as N. D. (No Data).



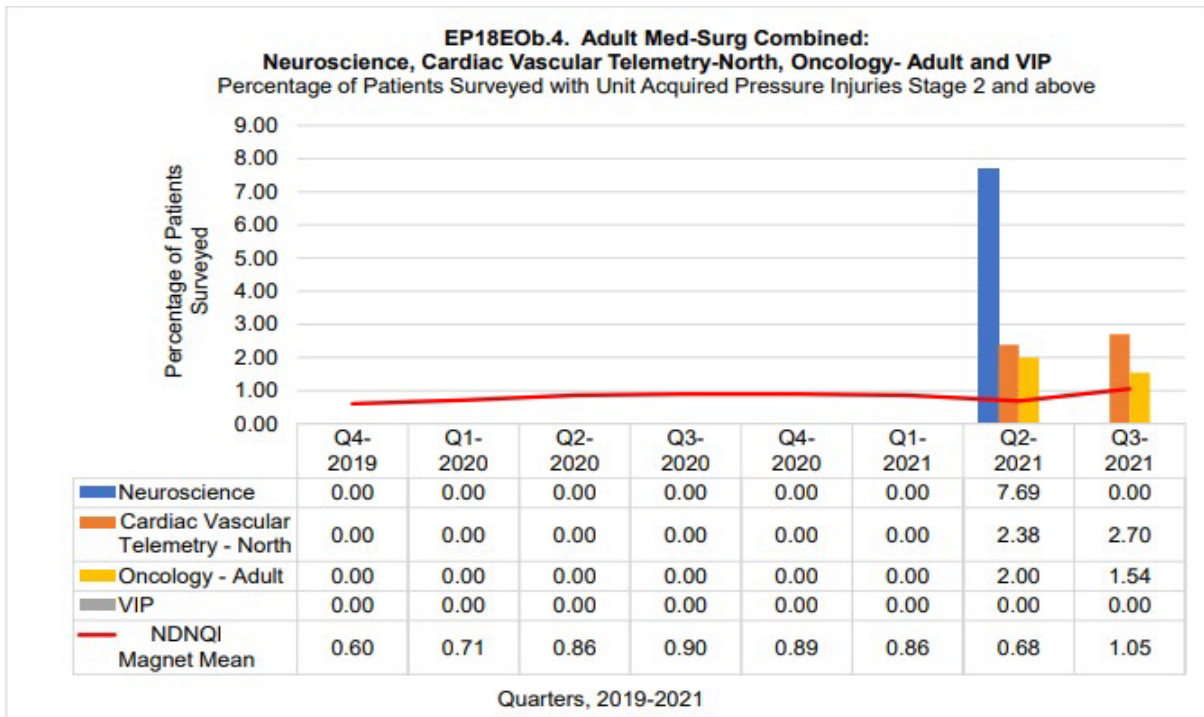
Surgical ICU outperforms the NDNQI Magnet Mean for 8/8 quarters. The MSICU (COVID-19) did not outperform the NDNQI Magnet Mean for 4/8 quarters.



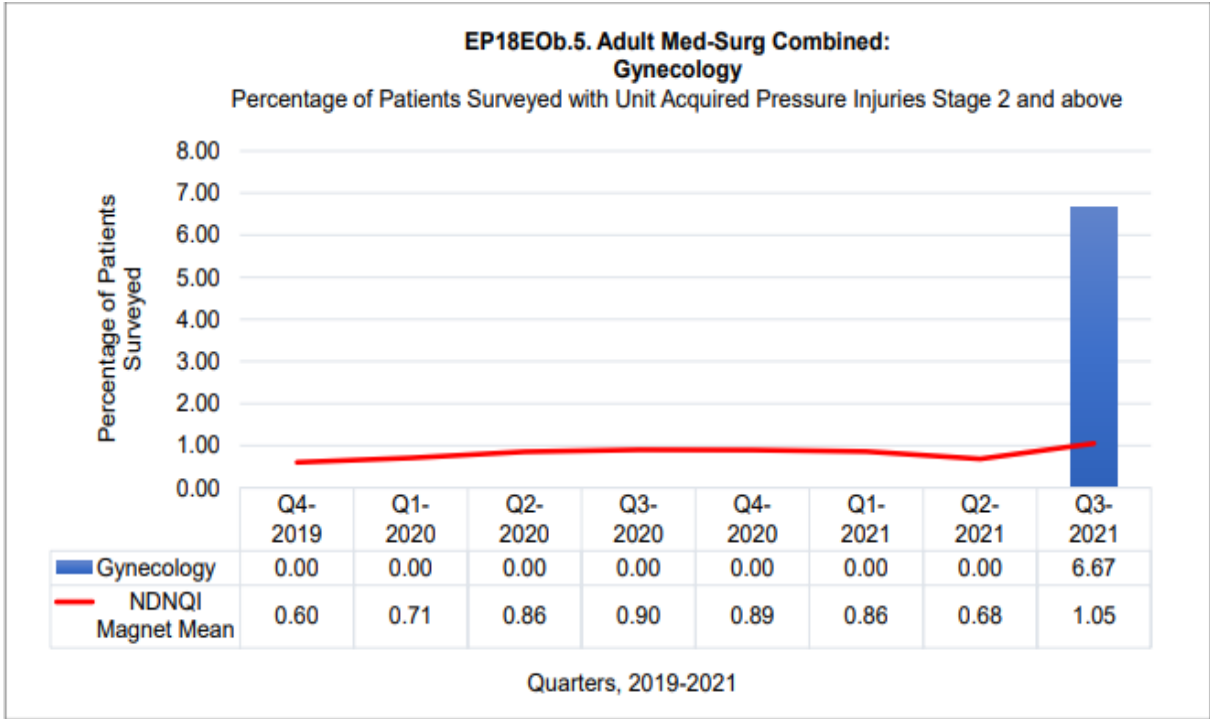
All three units outperform the NDNQI Magnet Mean for 7/8 quarters or more.



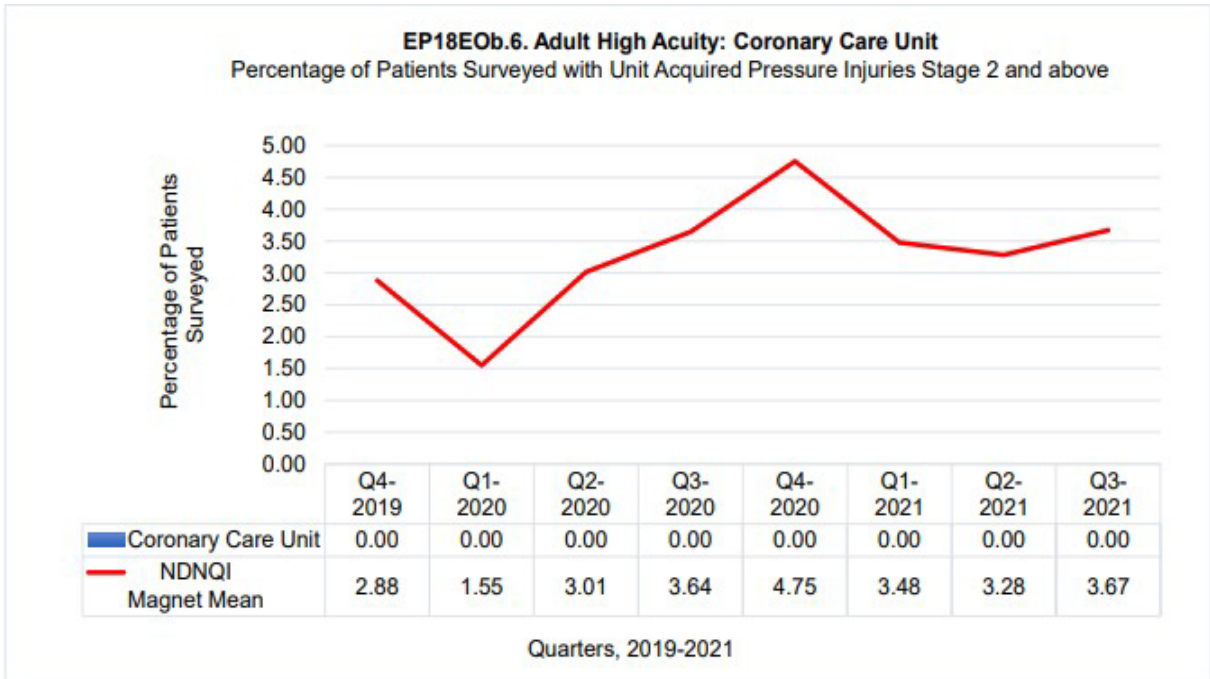
Both units outperform the NDNQI Magnet Mean for 6/8 quarters or more.



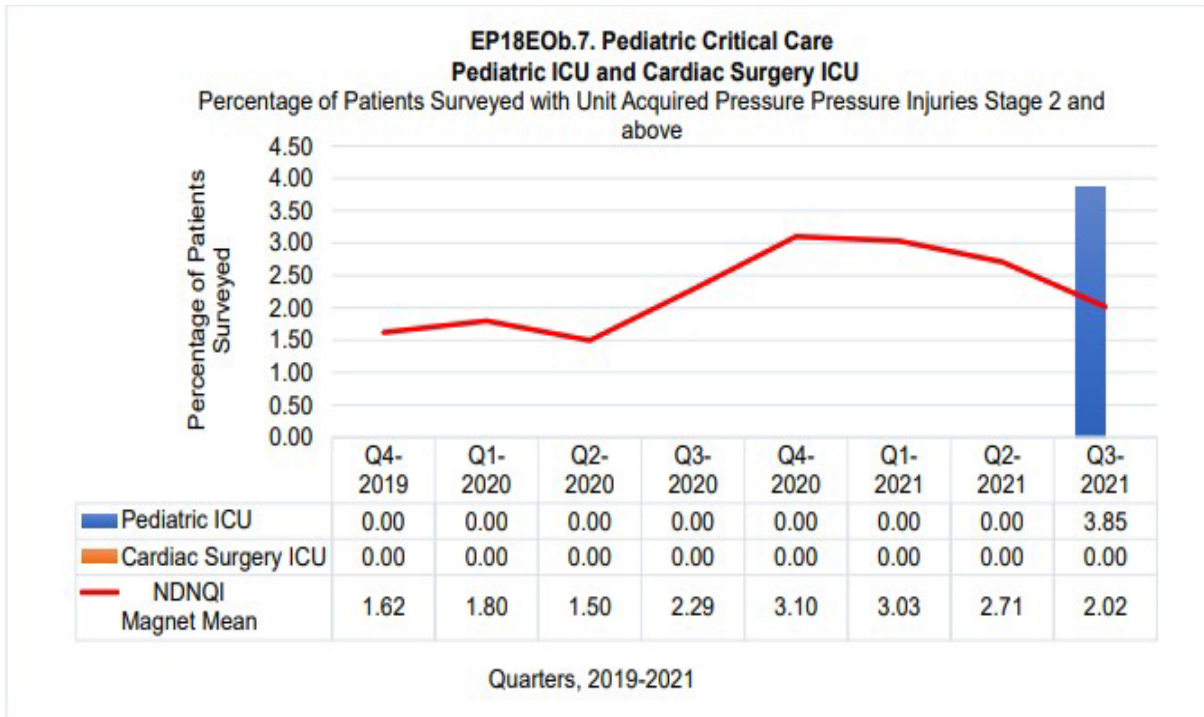
All four units outperform the NDNQI Magnet Mean for 6/8 quarters or more.



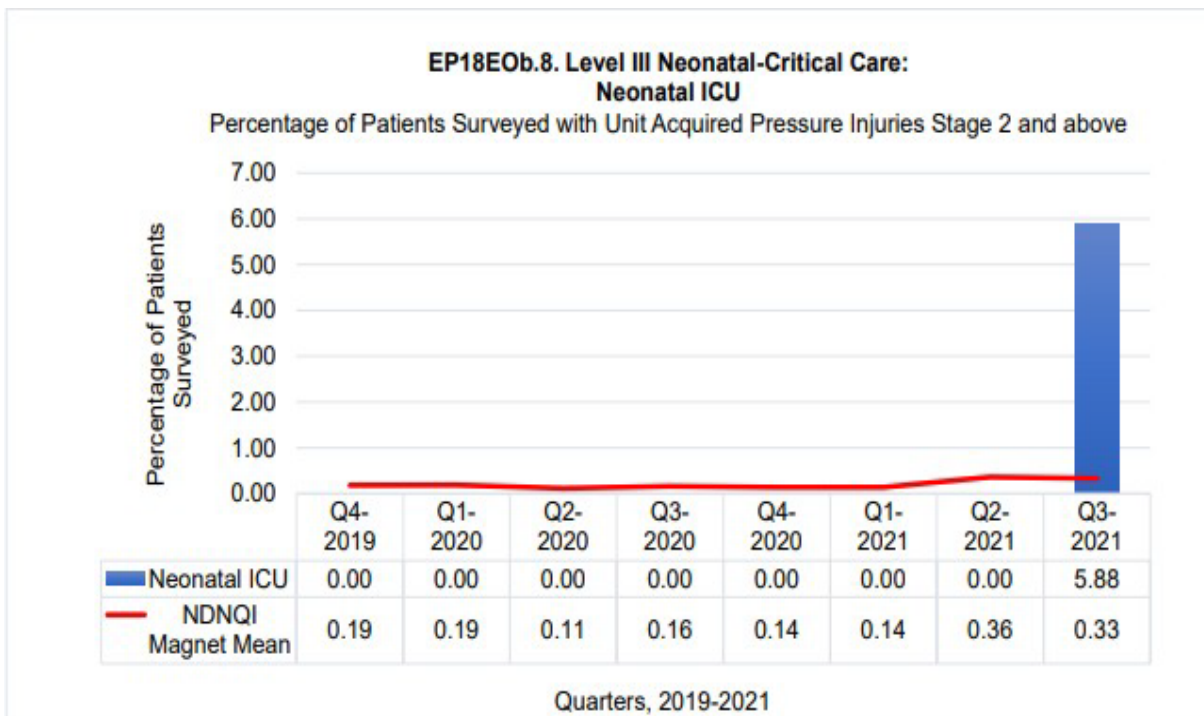
Gynecology unit outperforms the NDNQI Magnet Mean for 7/8 quarters.



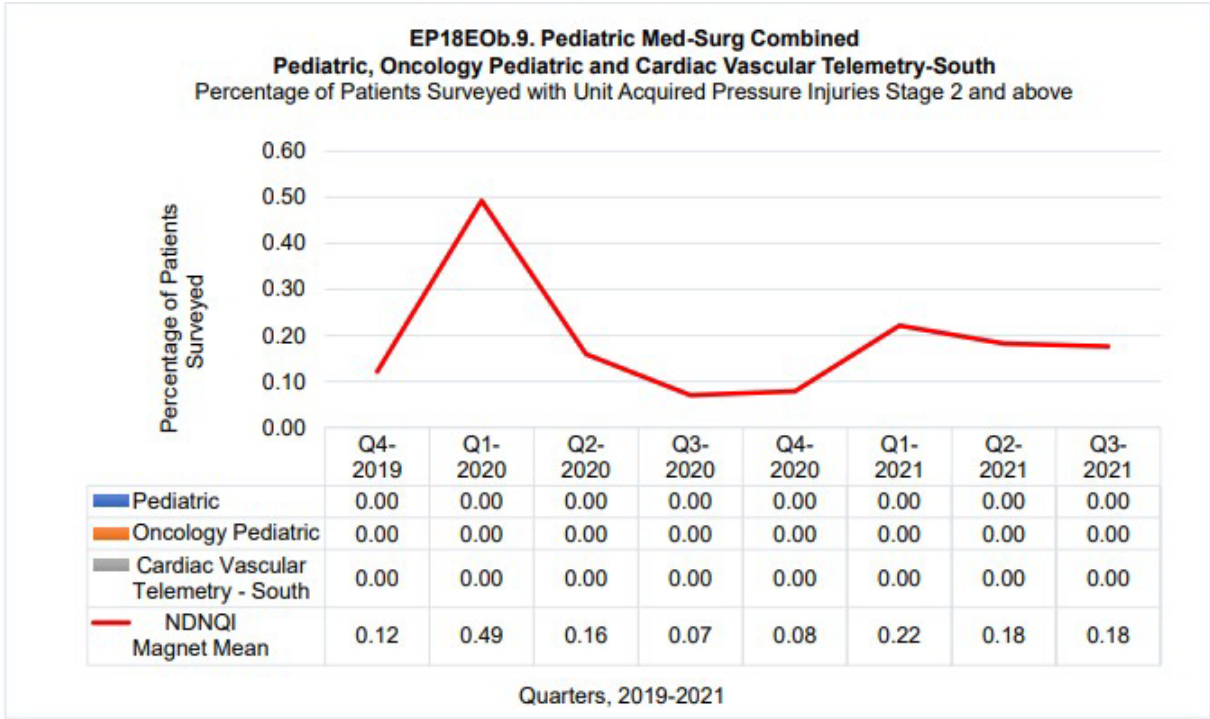
Coronary Care Units outperforms the NDNQI Magnet Mean for 8/8 quarters.



Both units outperform the NDNQI Magnet Mean for 7/8 quarters or more.



The NICU outperforms the NDNQI Magnet Mean for 7/8 quarters.



All three units outperform the NDNQI Magnet Mean for 8/8 quarters.