



EP18EO – Culture of Safety

EP18EOa Falls with Injury

Measurement: Rate of Falls with Injuries per 1000 patient days.

Vendor: National Database of Nursing Quality Indicators (NDNQI).

Benchmark: NDNQI Magnet Mean.

Units not included: The below units are excluded as they are classified as Inpatients in the organization and the vendor does not have inpatient measures for these units.

1. Labor and Delivery: Labor & Delivery
2. Operating Room Full Service: OR
3. Operating Room Full Service: Recovery Room

Units included: Table EP18EOa.1 below lists the units included for Fall with Injury Indicator.

Table EP18EOa.1 Units Included for Falls with Injury

Vendor Classification	Nursing Units
Critical Care-Adult	1. Med-Surg ICU (COVID-19) 2. Surgical ICU
Medical-Adult	3. 24 Hour Admission Unit (COVID-19) 4. Medical-North (COVID-19) 5. Medical-South (COVID-19)
Surgical-Adult	6. Surgical 7. Renal Transplant Unit
Med-Surg Comb. Adult	8. Cardiac Vascular Telemetry - North 9. Neuroscience 10. VIP 11. Oncology - Adult
Adult High Acuity	12. Coronary Care Unit
Postpartum	13. OB/GYN
Critical Care-Pediatric	14. Cardiac Surgery ICU 15. Pediatric ICU
Level III Neonatal Critical Care	16. Neonatal ICU

Pediatric Med-Surg Combined

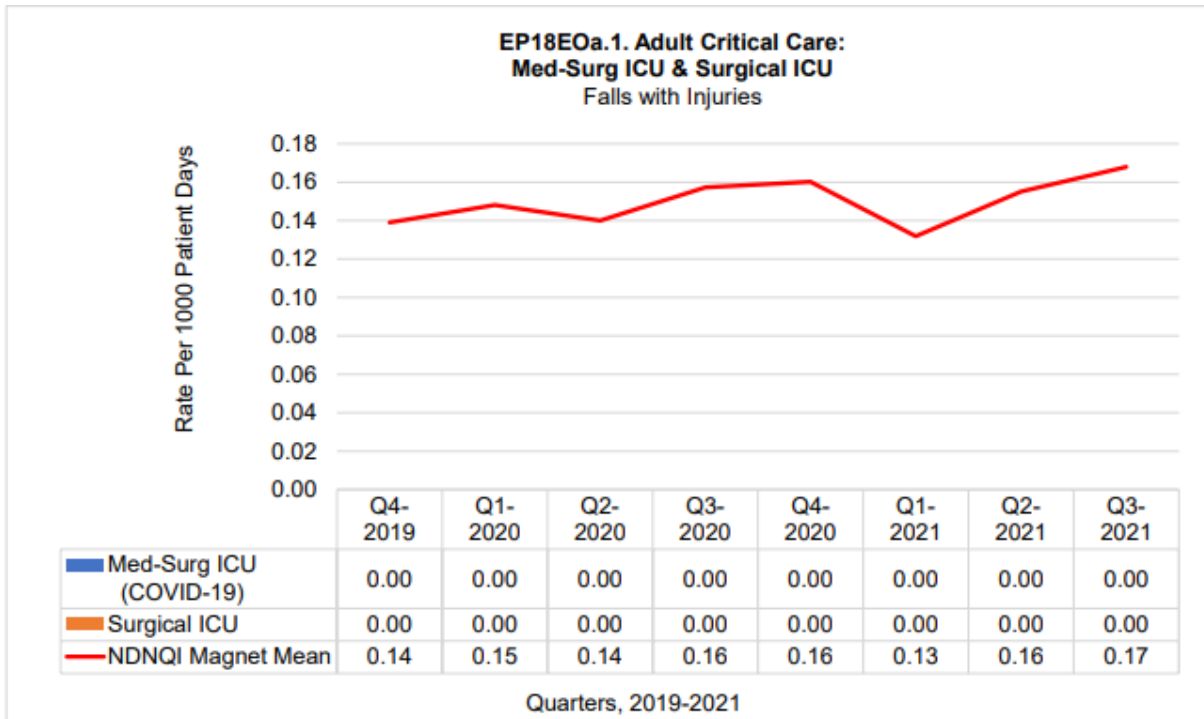
17. Pediatric
 18. Oncology Pediatric
 19. Cardiac Vascular Telemetry-South

Table EP18EOa.2 Summary of Unit Results for Falls with Injury, 2019-2021

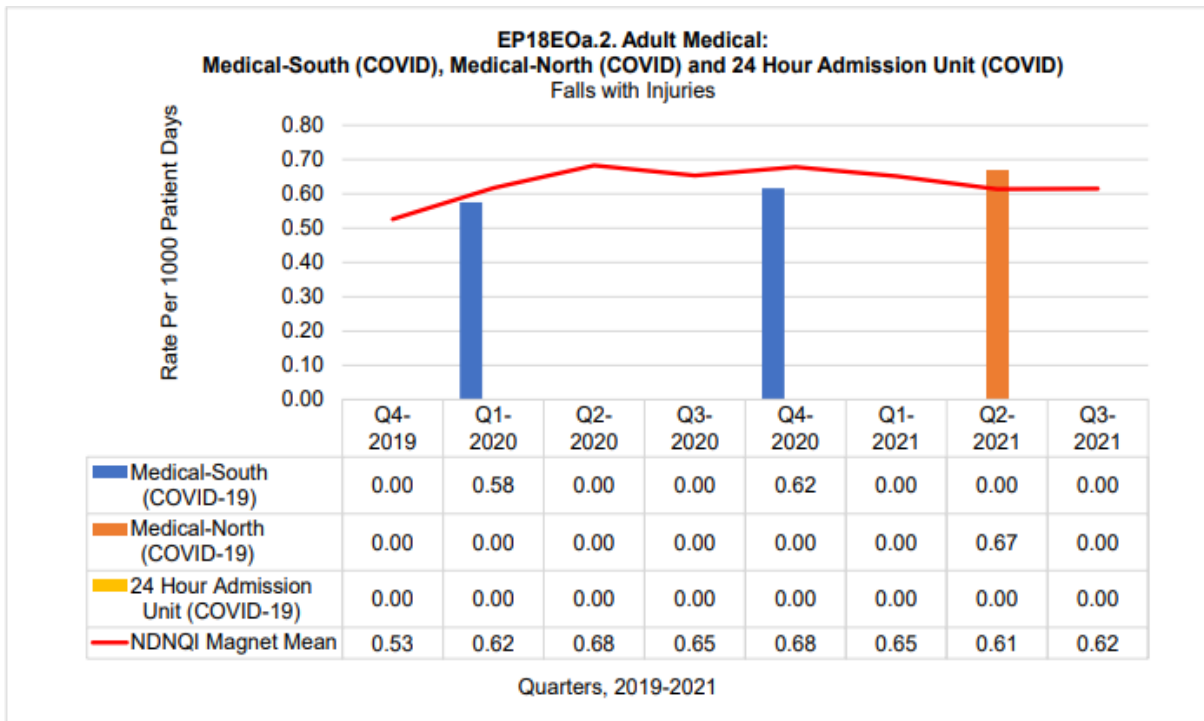
Summary of Falls with Injuries Indicator for all units NDNQI Magnet Mean									
Units	Q4-2019	Q1-2020	Q2-2020	Q3-2020	Q4-2020	Q1-2021	Q2-2021	Q3-2021	Outperform
1. Med-Surg ICU (COVID-19)	0.00	0.00	0.00	0.00	0.00	0.00	0.00	0.00	8/8
2. Surgical ICU	0.00	0.00	0.00	0.00	0.00	0.00	0.00	0.00	8/8
3. Medical-South (COVID-19)	0.00	0.58	0.00	0.00	0.62	0.00	0.00	0.00	8/8
4. Medical-North (COVID-19)	0.00	0.00	0.00	0.00	0.00	0.00	0.67	0.00	7/8
5. 24 Hour Admission Unit (COVID-19)	0.00	0.00	0.00	0.00	0.00	0.00	0.00	0.00	8/8
6. Surgical	0.00	0.00	0.00	0.00	0.00	0.00	0.00	0.31	8/8
7. Renal Transplant Unit	0.00	0.00	0.00	0.00	0.00	0.00	0.00	0.00	8/8
8. Neuroscience	0.00	1.49	1.14	0.00	1.50	1.41	0.00	1.44	3/8
9. Cardiac Vascular Telemetry - North	0.00	0.63	0.00	0.00	0.00	0.00	0.00	0.00	7/8
10. Oncology - Adult	0.00	0.00	0.00	0.00	0.00	0.00	0.00	0.00	8/8
11. VIP	0.00	0.00	0.00	0.00	0.00	0.00	0.00	0.00	8/8
12. Coronary Care Unit	0.00	0.00	0.00	0.00	0.00	0.00	0.00	0.00	8/8
13. OB/GYN	0.00	0.00	0.00	0.00	0.00	0.00	0.00	0.00	8/8
14. Pediatric ICU	0.00	0.00	0.00	0.00	0.00	0.00	0.00	0.00	8/8
15. Cardiac Surgery ICU	0.00	0.00	0.00	0.00	0.00	0.00	0.00	0.00	8/8
16. Neonatal ICU	0.00	0.00	0.00	0.00	0.00	0.00	0.00	0.00	8/8
17. Pediatric	0.00	0.00	0.00	0.00	0.00	0.00	0.00	0.00	8/8
18. Oncology Pediatric	0.00	0.00	0.00	0.62	0.00	0.00	0.00	0.00	7/8
19. Cardiac Vascular Telemetry - South	0.00	0.00	0.00	0.00	0.00	0.00	0.00	0.00	8/8
Units Outperforming NDNQI Magnet Mean	19/19	18/19	18/19	19/19	18/19	18/19	18/19	18/19	18/19

Outcome

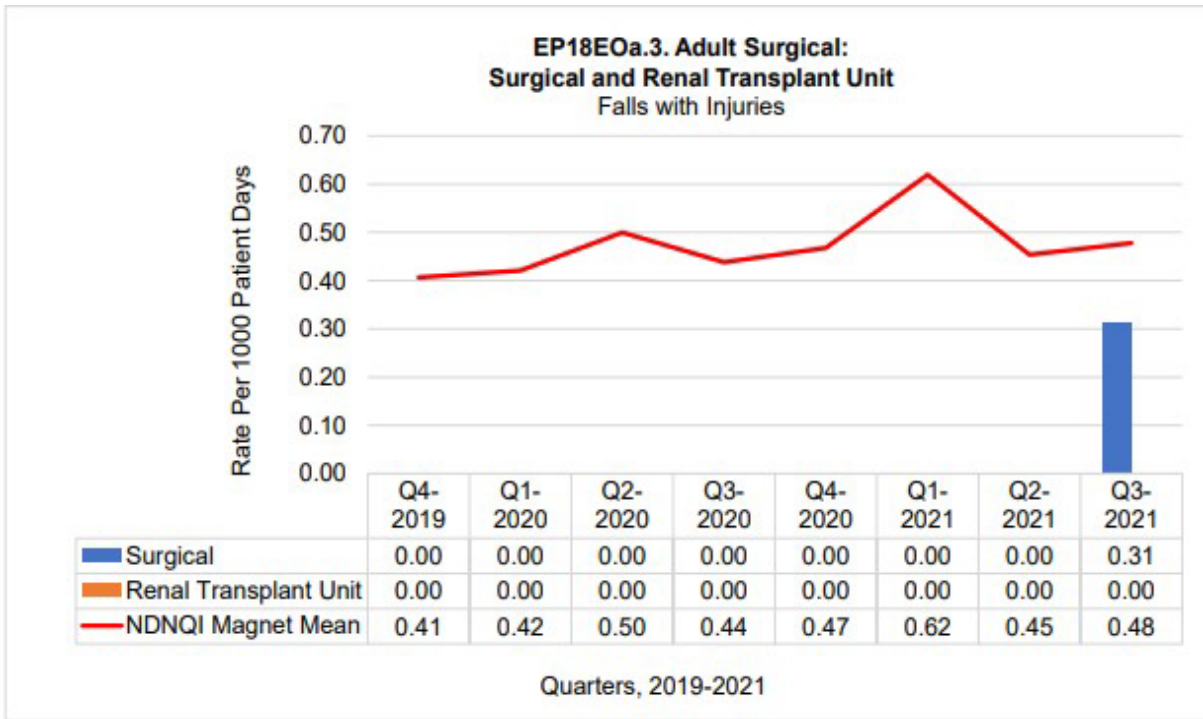
- 18/19 units (94.73%) outperform the Magnet Mean for Falls with Injury more than 50% of the time (5/8 quarters).
- Neuroscience unit did not outperform the NDNQI Magnet Mean for 5/8 quarters.



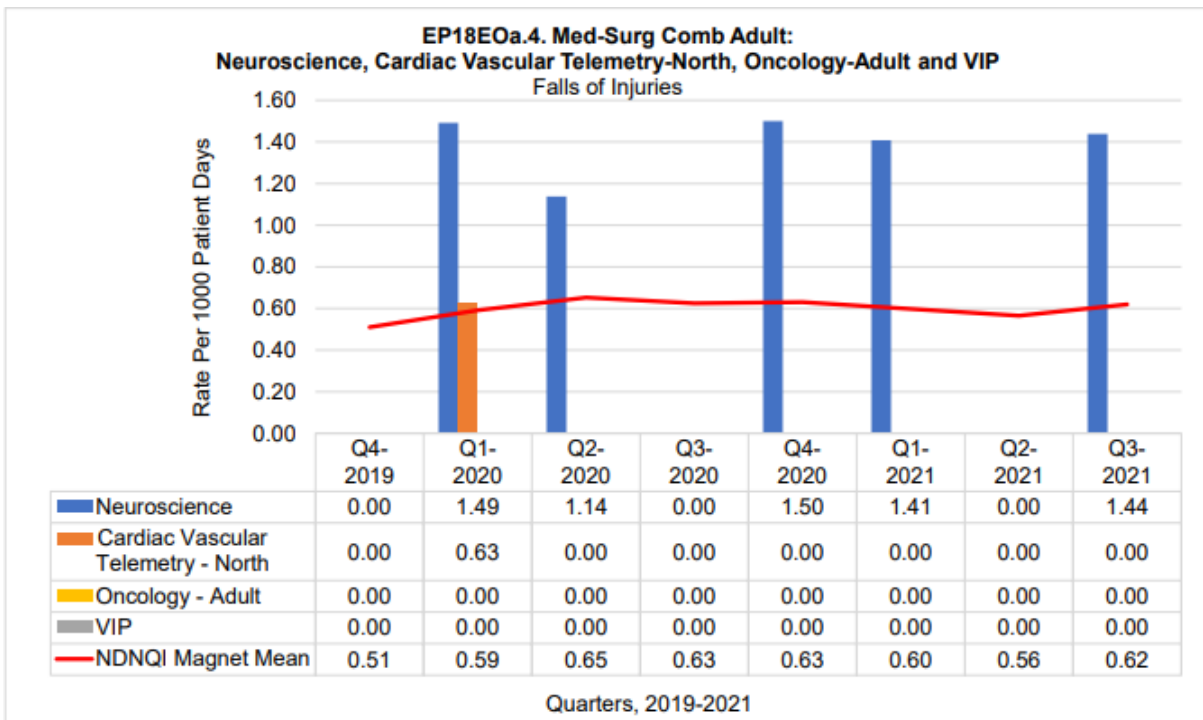
Both units outperform the NDNQI Magnet Mean for 8/8 quarters.



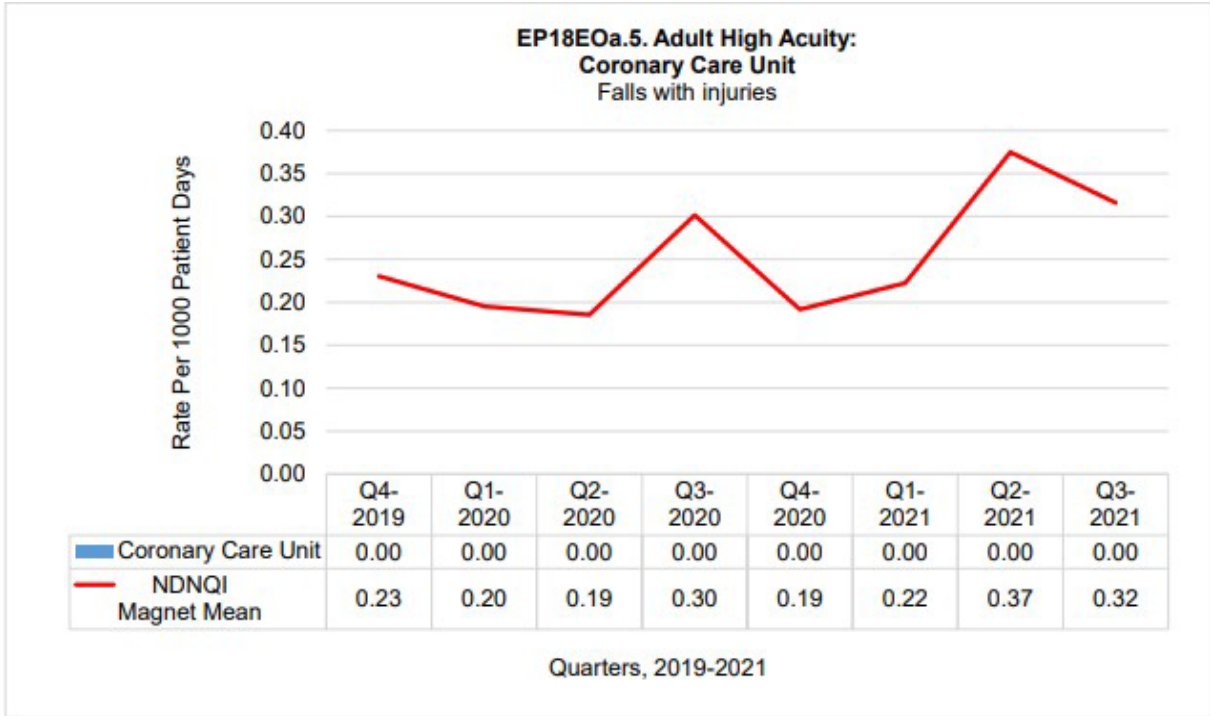
All three units outperform the NDNQI Magnet Mean for 7/8 quarters or more.



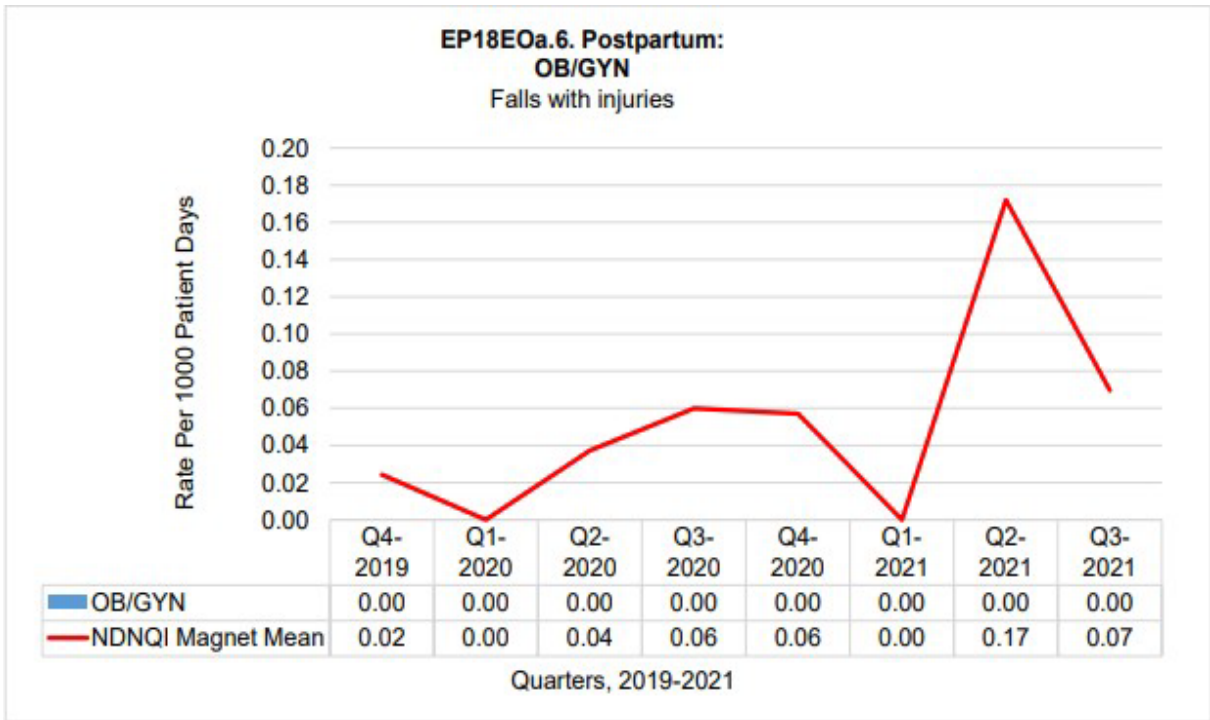
Both units outperform the NDNQI Magnet Mean for 8/8 quarters.



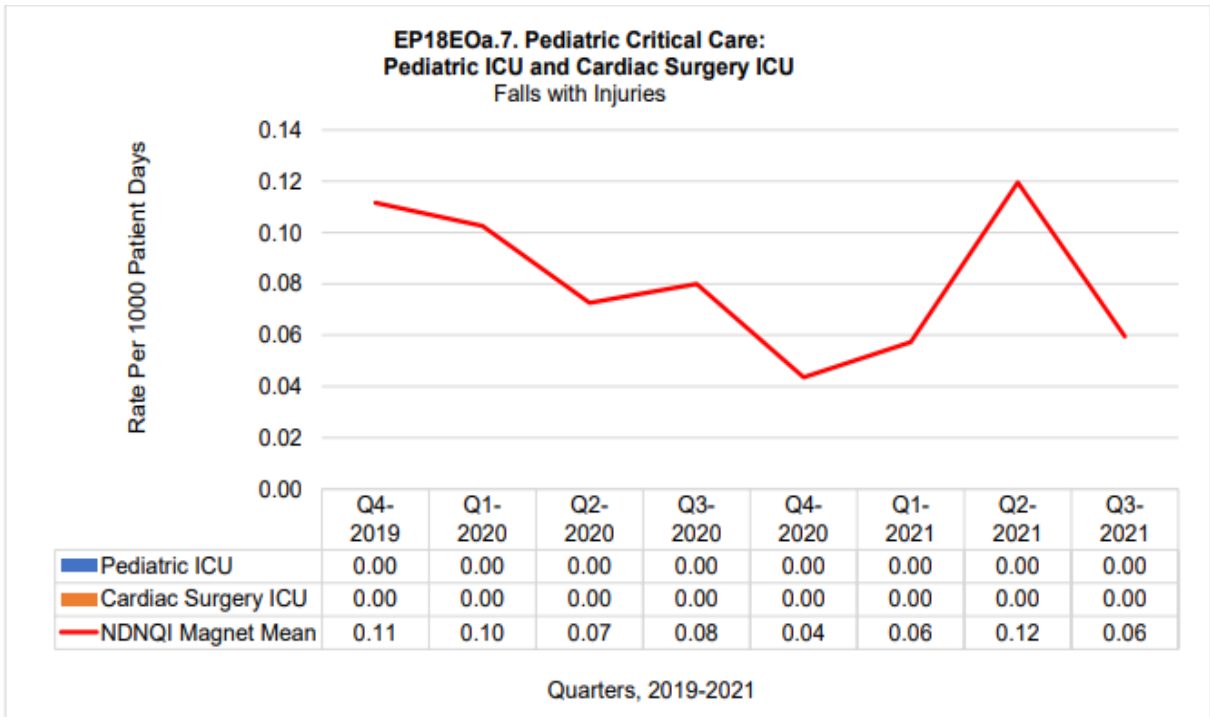
The Neuroscience did not outperform the NDNQI Magnet Mean for 5/8 quarters. The other three units outperform the NDNQI Magnet Mean for 7/8 quarters or more.



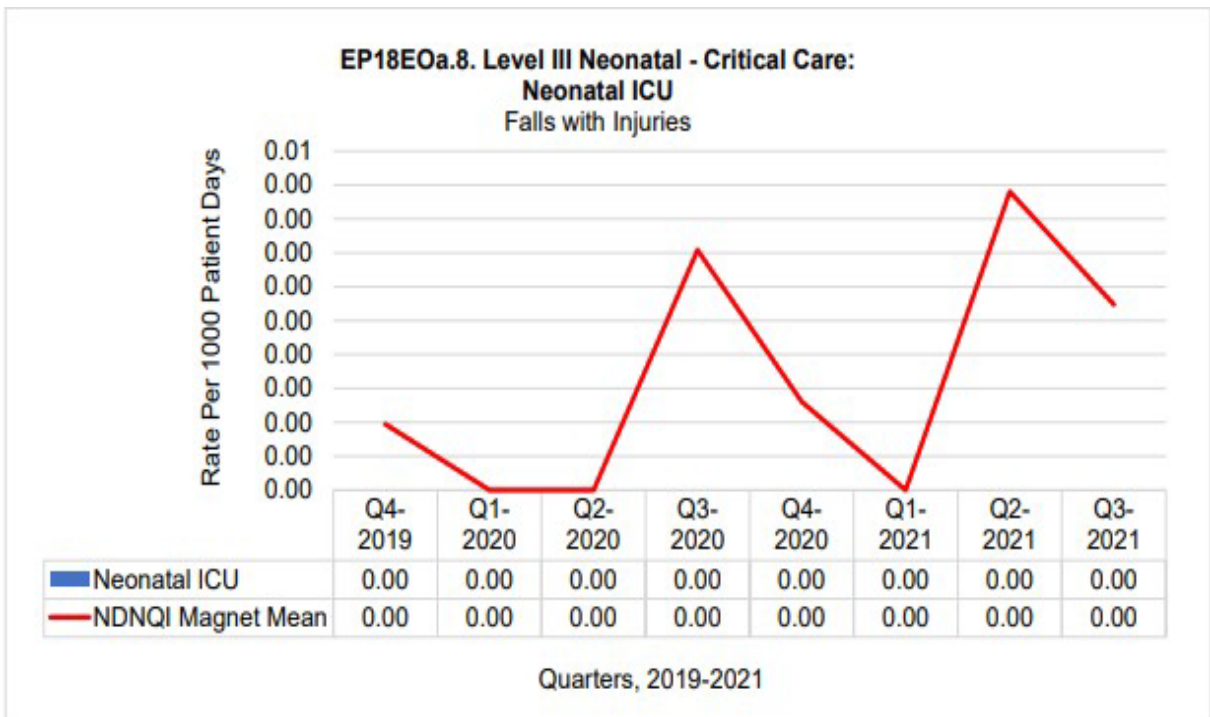
Coronary Care Unit outperforms the NDNQI Magnet Mean for 8/8 quarters.



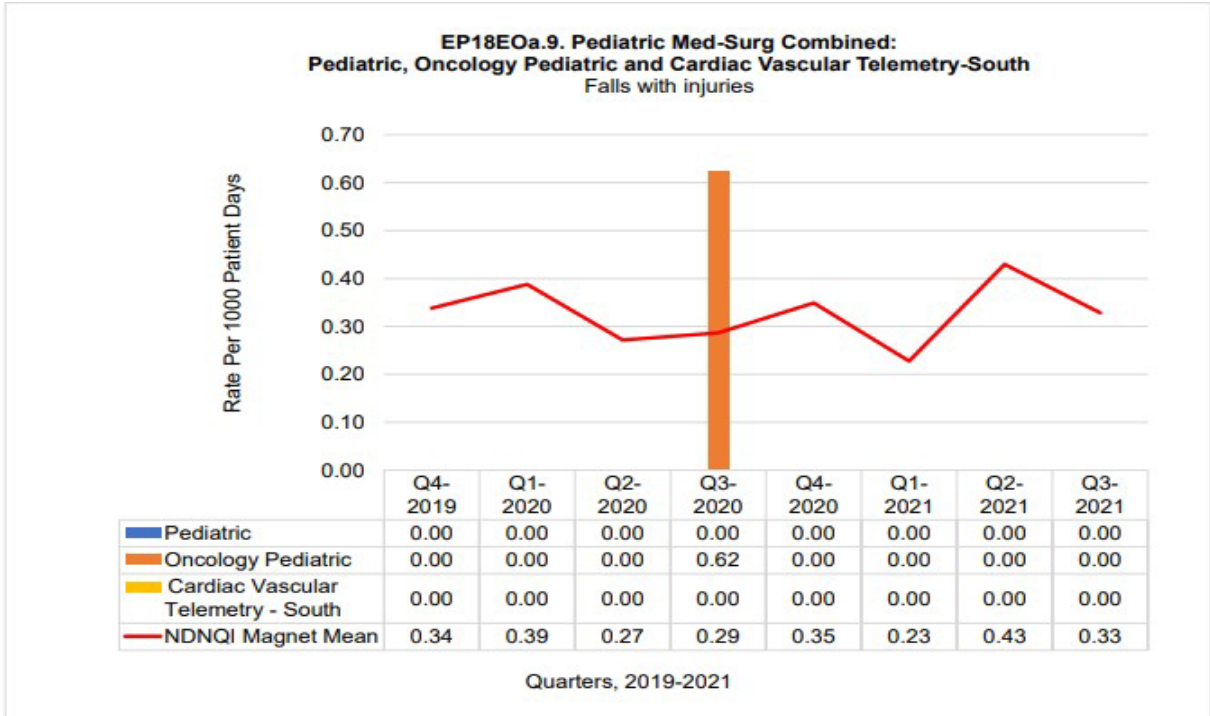
OB/GYN unit outperforms the NDNQI Magnet Mean for 8/8 quarters.



All three units outperforms the NDNQI Magnet Mean for 8/8 quarters.



Neonatal ICU outperforms the NDNQI Magnet Mean for 8/8 quarters.



All three units outperform the NDNQI Magnet Mean for 7/8 quarters.