



مستشفى الملك فيصل التخصصي ومركز الأبحاث  
King Faisal Specialist Hospital & Research Centre  
مؤسسة عامة Gen. Org.

# Medical Mask (Surgical) and Respiratory Infection Control





# Medical Mask (Surgical) and Respiratory Infection Control



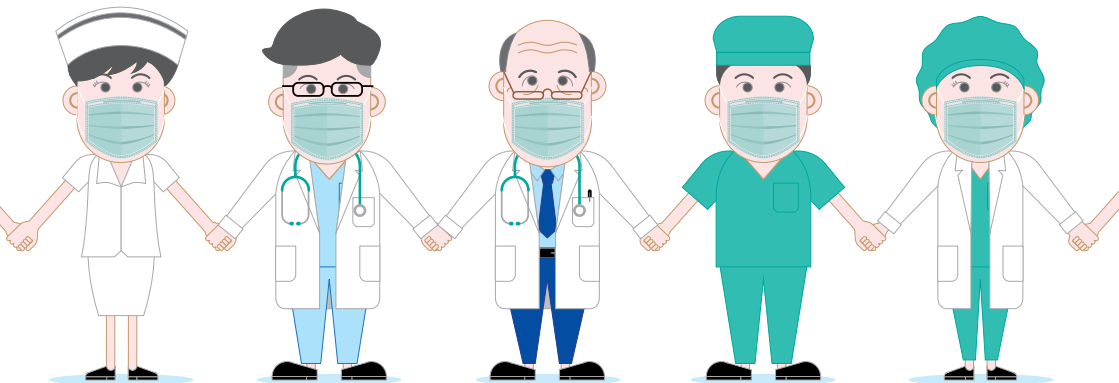
## Introduction:

Face masks form a barrier between the mouth/nose and pollutants from surrounding environment for those who wear it. Face mask is one of the contributing preventive measures to stop respiratory infections from spreading.

## Facemasks Types:

There are different types of facemasks available in pharmacies and medical supplies stores, medical (Surgical), fabric and N95 facemasks.

Face masks are for public use, **while healthcare providers use N95 masks** while performing aerosol generating procedures, such as inserting and removing the mechanical breathing tube, on patients with infectious respiratory diseases. N95 masks help prevent small particle droplets from passing through by 95%.



## Cases where Face Medical Mask (Surgical) are required:

- Healthcare workers.
- People suspected to have COVID-19 virus infection even with mild symptoms.
- People aged 60 and above.
- People with chronic diseases like cardiovascular heart diseases, diabetes, chronic lung diseases, cancer, cerebrovascular diseases and immune deficiencies.

## Correct Steps for Wearing A Medical Face Mask (Surgical):



1

- Clean hands with soap and water for at least 20 seconds. If not available, use a hand sanitizer that contains at least 60% of alcohol.



- Wear white side inwards, which is a water absorbent. The colored side of the mask to be worn outwards, which is water proof.

Secure mask with one hand ■  
placing metal strip over  
nose bridge.





- Pull the mask's lower part using the other hand to cover the chin.

Secure mask behind ears or head depending on its type. ■





- Ensure there is no space between mask and face and pinch metal strip over nose bridge.



Avoid touching the face ■  
mask after wearing it.  
If this happens, clean  
hands with soap and  
water or alcohol sanitizer.

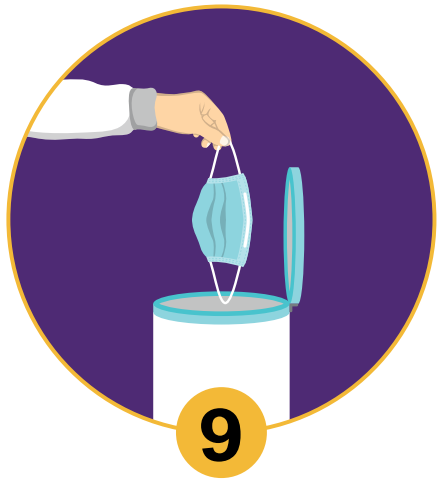






- Replace if it gets wet or soaked.

Remove it using the rear part, ■  
dispose it immediately in a  
closed bin and clean your  
hands properly.



## References:

- [www.moh.gov.sa](http://www.moh.gov.sa)
- [www.who.int](http://www.who.int)



**King Faisal Specialist Hospital & Research Center**  
**P.O. Box 3354 Riyadh 11211**  
**Kingdom of Saudi Arabia**  
**Tel: +966 114647272**  
**[www.kfshrc.edu.sa](http://www.kfshrc.edu.sa)**

CSR 20-005

1441 H - 2020 G